

BIO/SCREEN®

ORAL EXAM SYSTEM

PN 110090

- BIOFLUORESCENCE VISUALIZATION
- NEW LED TECHNOLOGY
- CORDLESS AND RECHARGEABLE
- NO FAN, QUIET OPERATION
- REIMBURSEMENT CODES APPLY
- ORABLU MARKING SYSTEM AVAILABLE



CoMax

COMPOSITE DISPENSER

PN 120000

- ACCEPTS MOST COMPOSITE COMPULES
- ERGONOMIC HANDLE AND TRIGGER
- EASY ONE HAND UNLOADING
- AUTOCLAVEABLE
- EXTRUDES ENTIRE COMPULE CONTENTS



CALSET™

Composite Warmer

PN 110007-54 Calset with Multi Tray

- INCREASES COMPOSITE FLOW
- GREATLY REDUCES CURING TIME
- INCREASES DEPTH OF CURE
- MANY DIFFERENT TRAYS ARE AVAILABLE FOR SPECIAL APPLICATIONS
- HOLDS COMPOSITE DISPENSER, 4 COMPULES, 2 SYRINGES AND 2 FINISHING INSTRUMENTS



Toll Free: 877-772-3888 | PrestigeDentalProducts.com



ADDENT, INC. 43 MIRY BROOK ROAD, DANBURY, CONNECTICUT 06810 USA
 TEL: 203.778.0200 | FAX: 203.792.2275 | INFO@ADDENT.COM | WWW.ADDENT.COM
 ISO 9001 CERTIFIED & 13485 COMPLIANT | ALL PRODUCTS ARE FDA CLEARED



Rite-lite 2™

TRI-SPECTRA/HI CRI SHADE LIGHT

PN 110075

- HIGH CRI LED TECHNOLOGY
- THREE COLOR TEMPS., 5500°K, 3200°K, 3900°K
- CONSTANT LIGHT OUTPUT
- BATTERY LIFE INDICATOR
- POLARIZED FILTER AVAILABLE



MICROLUX™

TRANSILLUMINATOR

MICROLUX DIAGNOSTIC SYSTEM

- 110019 with 3mm light guide
- 630003 - 3mm Light Guide - detects caries, calculus and crack visualization
- 600045 - 2mm Light Guide - posterior caries visualization
- 600053 - DL Light Guide - diffused cancer screening light guide
- 640041 & 640035 - Perio Probe & Endo Lite - visualize gingival recession, root canal, root fracture & interproximal caries.
- 640072 - Proximal Caries Attachment with (5) .75mm Fiber Guides
- 640056 - Lighted Mirror - 5 pack
- 110066 - Pedo Light Guide



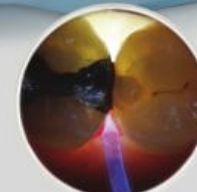
MICROLUX 2™

DIAGNOSTIC SYSTEM

- SLIM ERGONOMIC DESIGN
- HIGH & LOW OUTPUT LEVELS
- CONVENIENTLY LOCATED CONTROL BUTTON
- BATTERY VOLTAGE REGULATOR
- BATTERY LOW LEVEL INDICATOR
- FITS ALL EXISTING MICROLUX ATTACHMENTS
- USES 2 AAA BATTERIES



PN 110080-3
110080-2



Toll Free: 877-772-3888 | PrestigeDentalProducts.com



ADDENT, INC. 43 MIRY BROOK ROAD, DANBURY, CONNECTICUT 06810 USA
TEL: 203.778.0200 | FAX: 203.792.2275 | INFO@ADDENT.COM | WWW.ADDENT.COM
ISO 9001 CERTIFIED & 13485 COMPLIANT | ALL PRODUCTS ARE FDA CLEARED



P/N 660124 REV B 12/2017